

RITESPEED

"We installed many of these systems on customers' equipment with satisfactory results!"

*(Cyril Vachon,
Equipment Capital,
St. Ambroise, QC*

Automatic Belt Slip Monitor

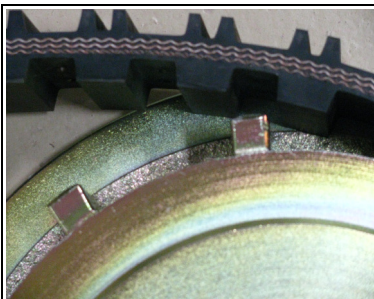
Monitor and detect belt slippage ***BEFORE*** blockage and damage occur.



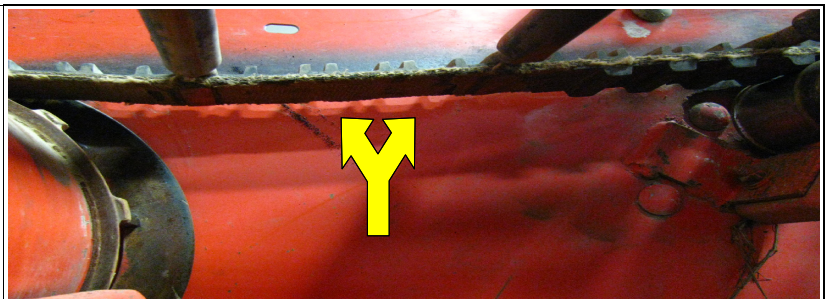
Grimme GT170 Potato Harvester.

The picture represents a typical example of a root crop harvester where many conveyor and drive belts are not visible from the tractor cab. Belt and conveyor slippage due to debris getting lodged or due to over-loading may go unnoticed until the machine is plugged. At that point manual labour is required to remove all the backed up soil, debris and crop. This results in lost time, frustration, possible crop damage or loss, and often damage to the conveyor and drive belts (see picture below).

Call your dealer for pricing and details.



LH photo shows the condition of a new belt. To the right, much of the profile on the belt is worn away due to slipping. The belt must be replaced.



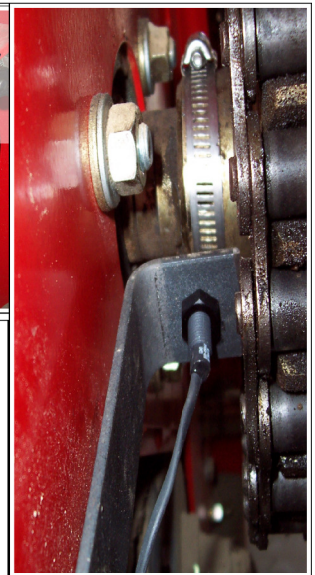
The ***RiteSpeed*** system consists of several sensors and a small controller. It continuously compares speed of the input drive shaft to the speeds of idler shafts and rollers. When the ratio falls outside a preselected range, the system sounds an alarm and shows the operator which conveyor or belt is slipping too much. The operator can reduce ground speed or stop the machine before it is plugged and before damage occurs.

RITESPEED SYSTEM at Tupling Farms, Shelburne, ON (4-row Grimme RL3600 Windrower)



The two pictures on the left show small round magnets embedded in shallow depressions drilled into the flanges of two styles of idler rollers. The third picture shows the sensor on a bracket. It emits a pulse each time the roller makes a revolution and the magnet passes by.

The picture on the far right shows the magnet fastened to the input drive shaft with a simple hose clip and the sensor in a bracket to pick up each revolution.



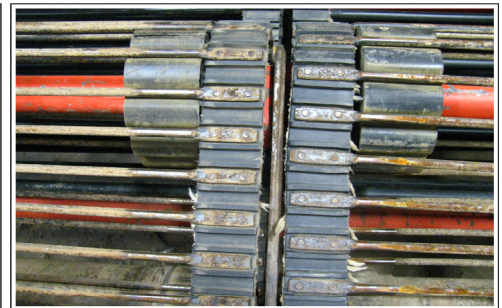
Controller with sealed keypad and bright display to navigate the simple menu system for set-up, fine-tuning, and diagnostics. An internal alarm sounds when the pre-set slip percentage is exceeded and the display shows which belt is slipping.

Features:

- **Suitable on a wide variety of equipment** to monitor speed & slippage of conveyors (solid belt or belted chain), V-belt driven pulleys, sprockets, and friction clutches.
- **Simple calibration** procedure automatically measures normal operating speeds of all monitored belts.
- **Expandable.** The basic kit includes sensors and wiring to monitor three separate conveyors or belts. Extra sensors with wiring may be purchased to monitor up to ten conveyors. Further expansion is possible for customized installations.
- **Can be configured to send an alarm** when one conveyor in a series fails to start after the others start.
- **Few components:** installation is a quick and simple job.
- **Easy to use** step-by-step menu system.
- **Durable.** Well designed components will stand the test of time and require little maintenance.



LH picture of a rearcross conveyor, not visible from the cab and so sometimes not re-engaged after a turn. Slipping and plugging may go unnoticed. RH picture shows common conveyor drives. Slipping will cause excessive wear on drives and conveyor.



The RiteSpeed offers protection.

Ordering Information

Part #: SM100-3

System includes Controller, Interface Box, sensors and wiring to monitor three conveyors or belts, installation and operator's manual. Installation not included and to be arranged by purchaser. One year limited warranty, with free technical support via telephone, fax, or email.

Visit Greentronics.com for dealer locations, contacts, more details

Or call: 519-669-4698 E-mail: info@greentronics.com

November, 2013